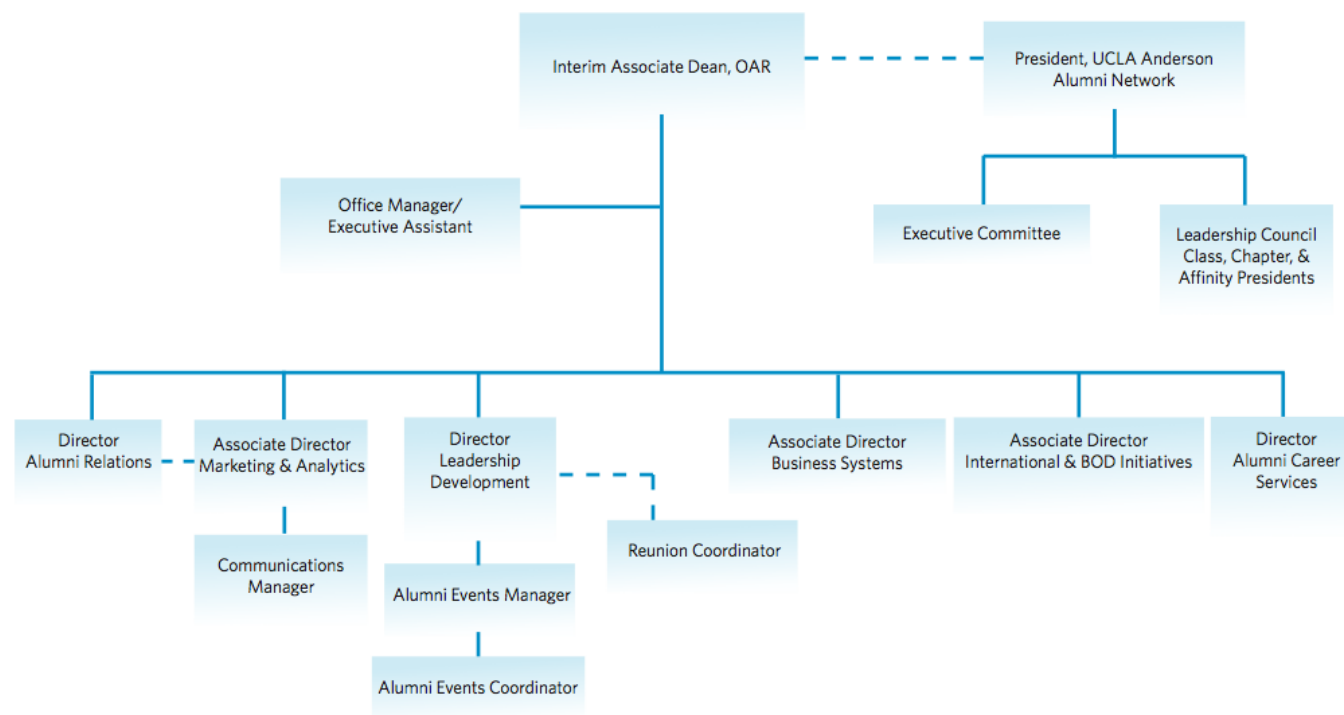


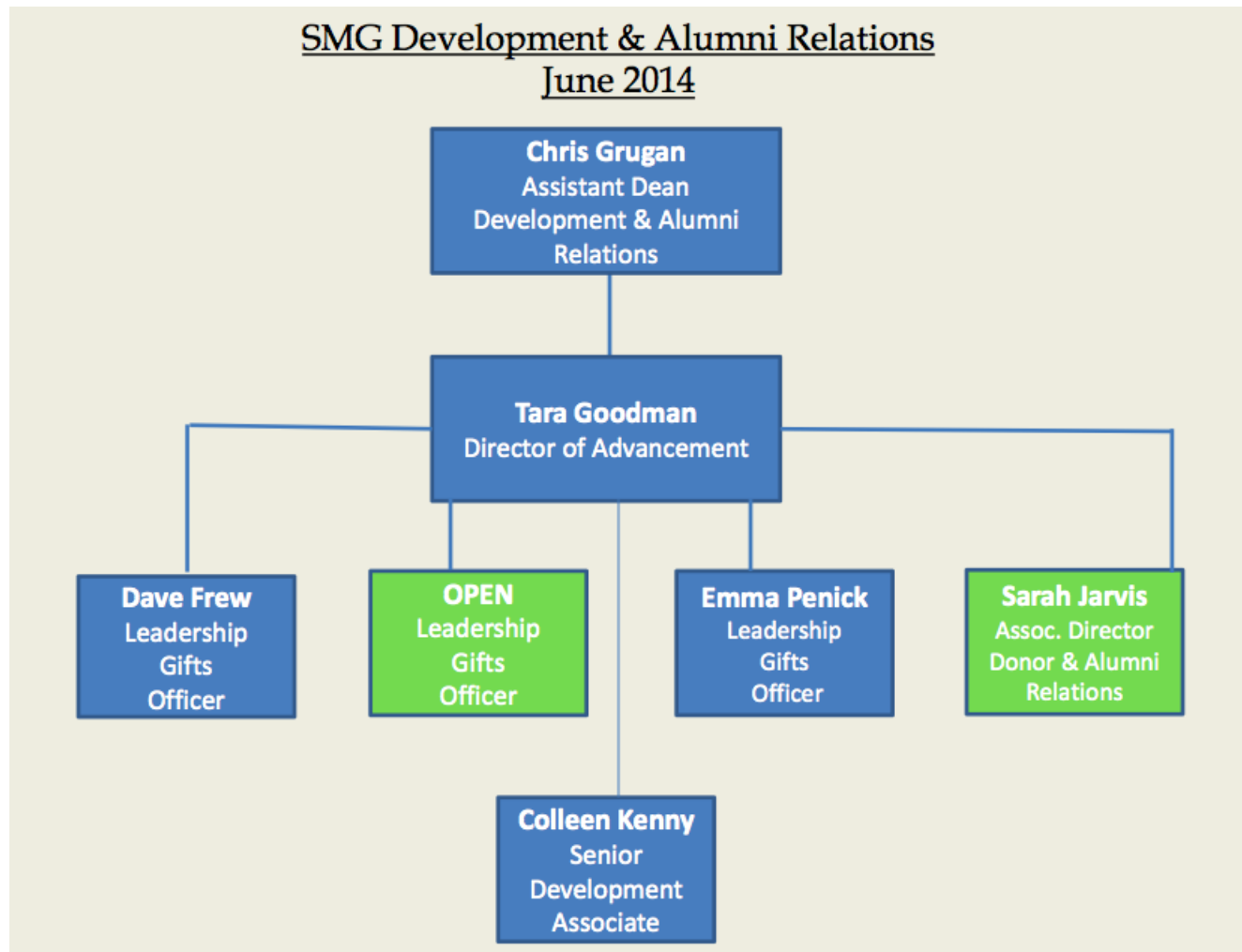
Anderson School of Management, University of California – Los Angeles

UCLAAnderson  
ALUMNI NETWORK

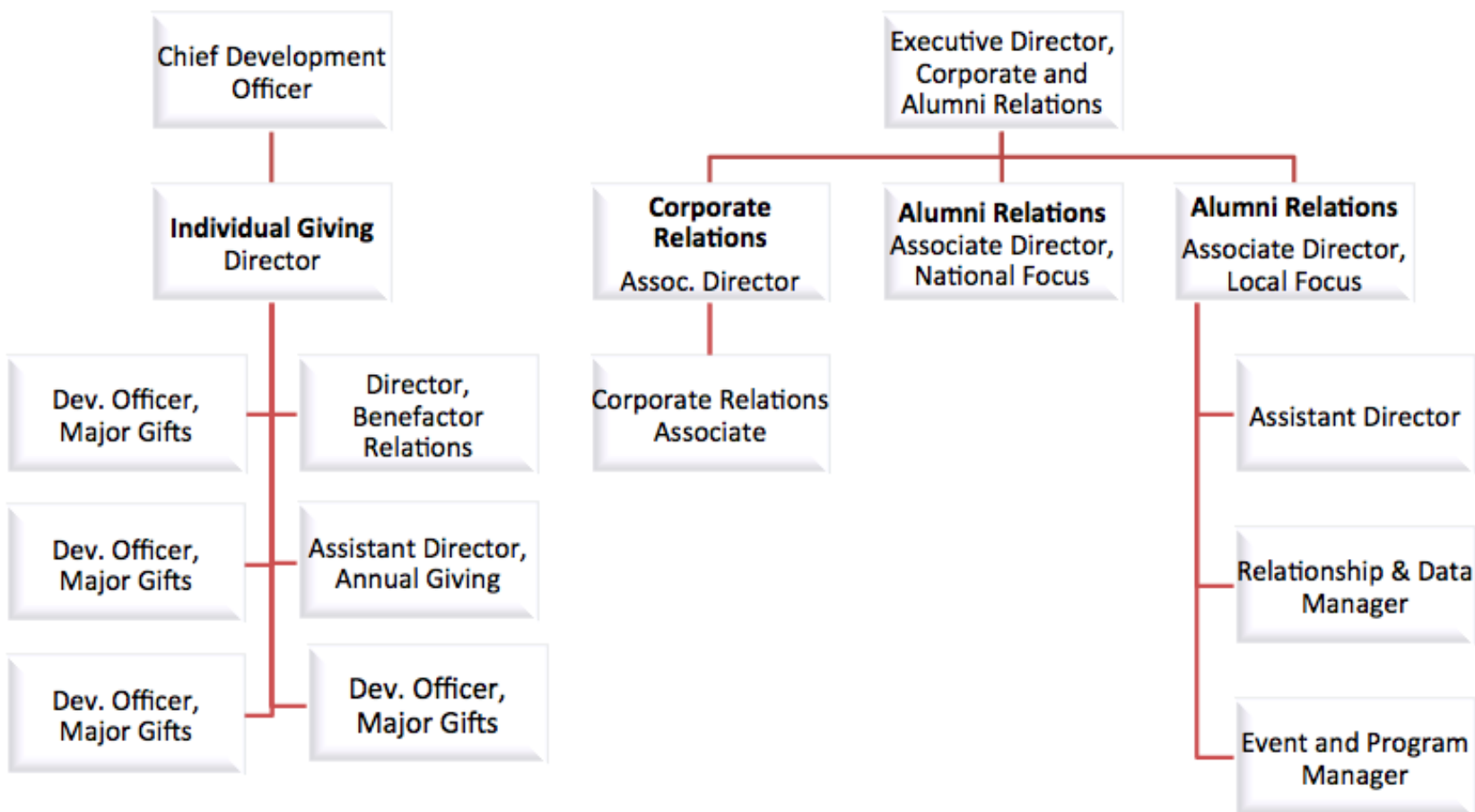
## UCLA Anderson Office of Alumni Relations



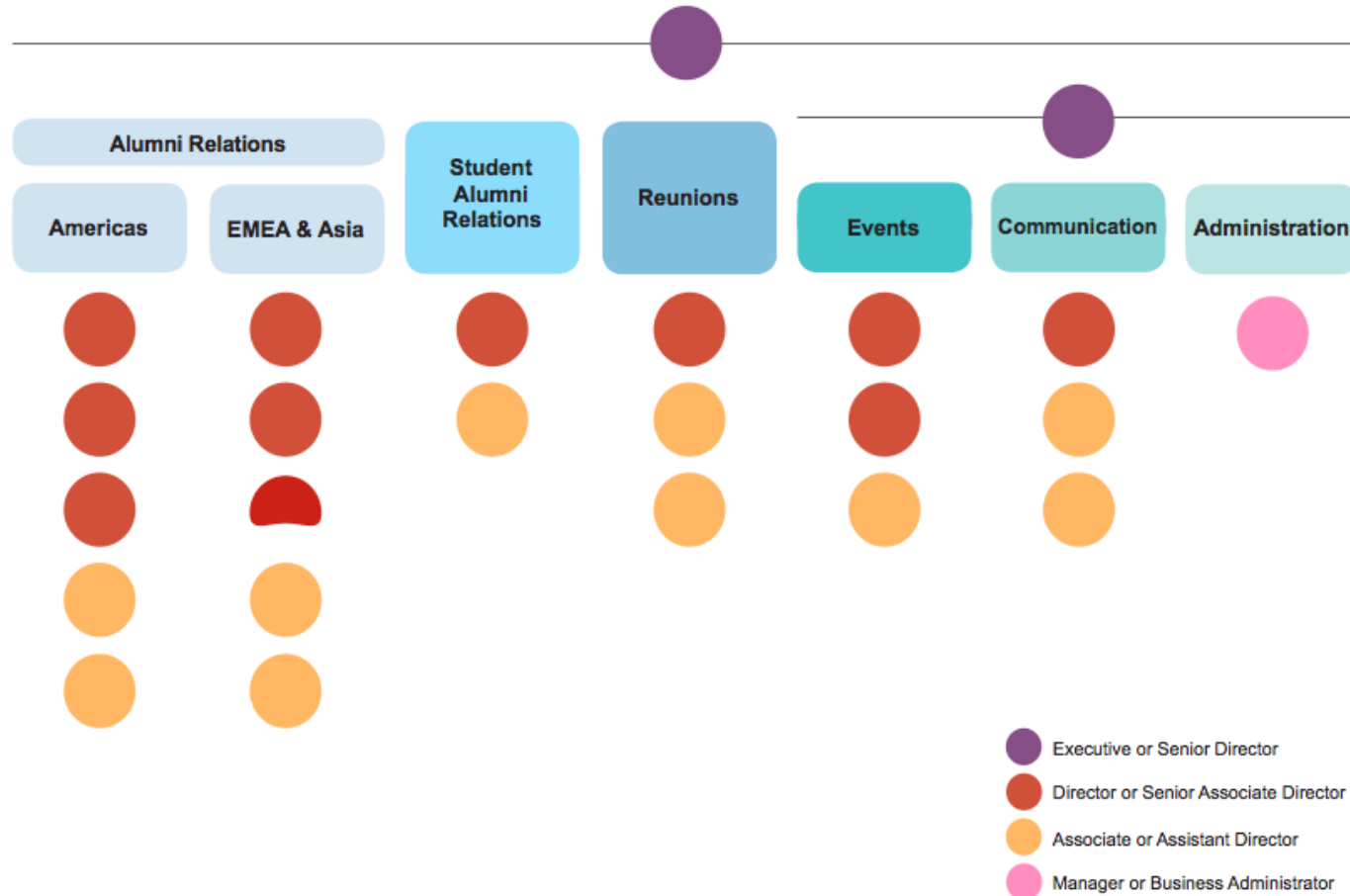
## Boston University School of Management

SMG Development & Alumni Relations  
June 2014

Carlson School of Management, University of Minnesota

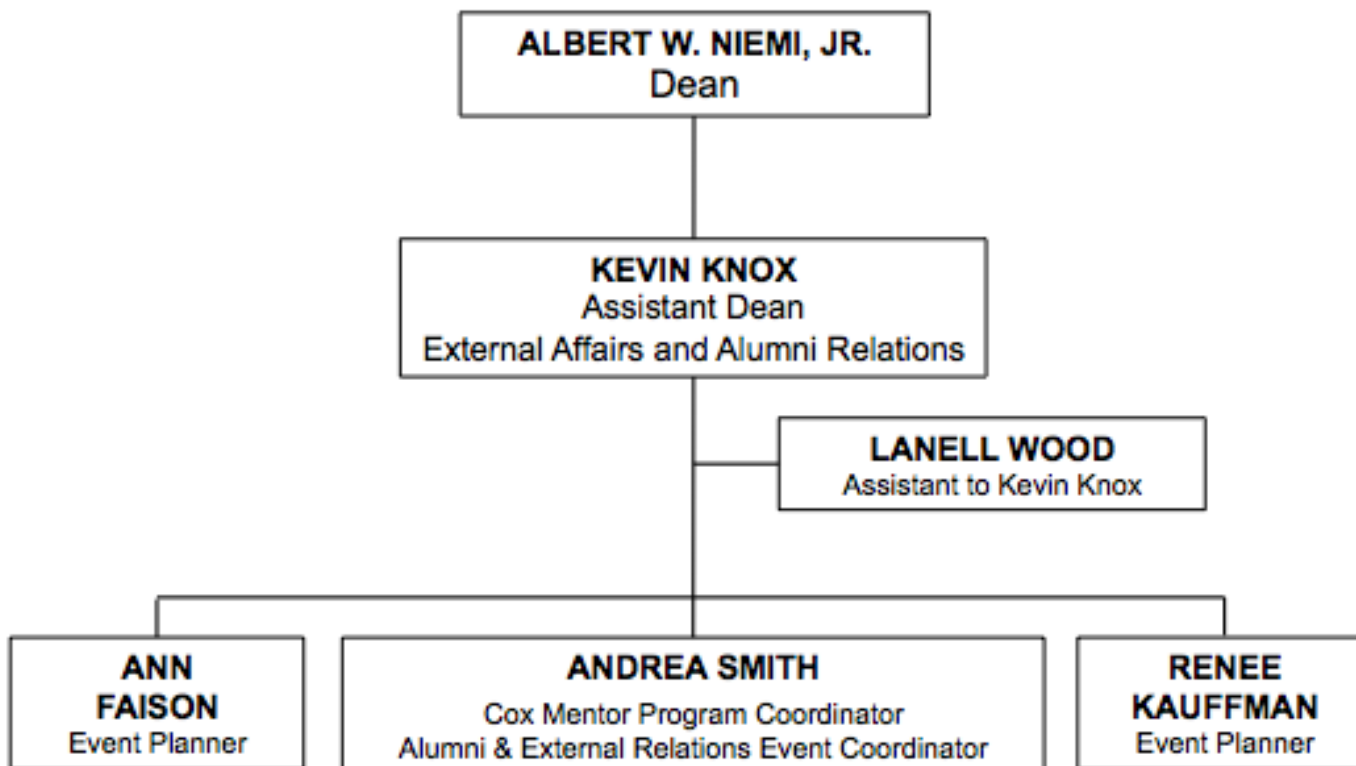


University of Chicago Booth School of Business



Cox School of Business, Southern Methodist University

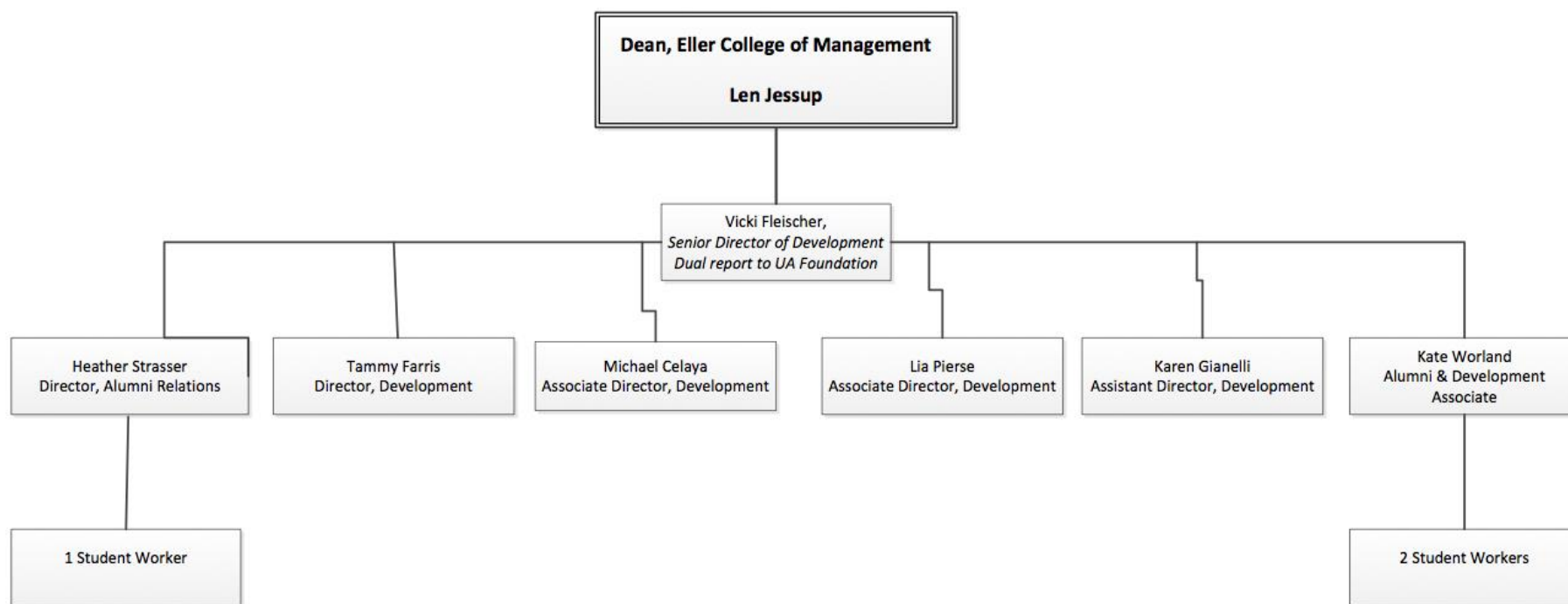
**Cox School of Business Organization  
Alumni Relations and External Affairs**



Eller College of Management, University of Arizona



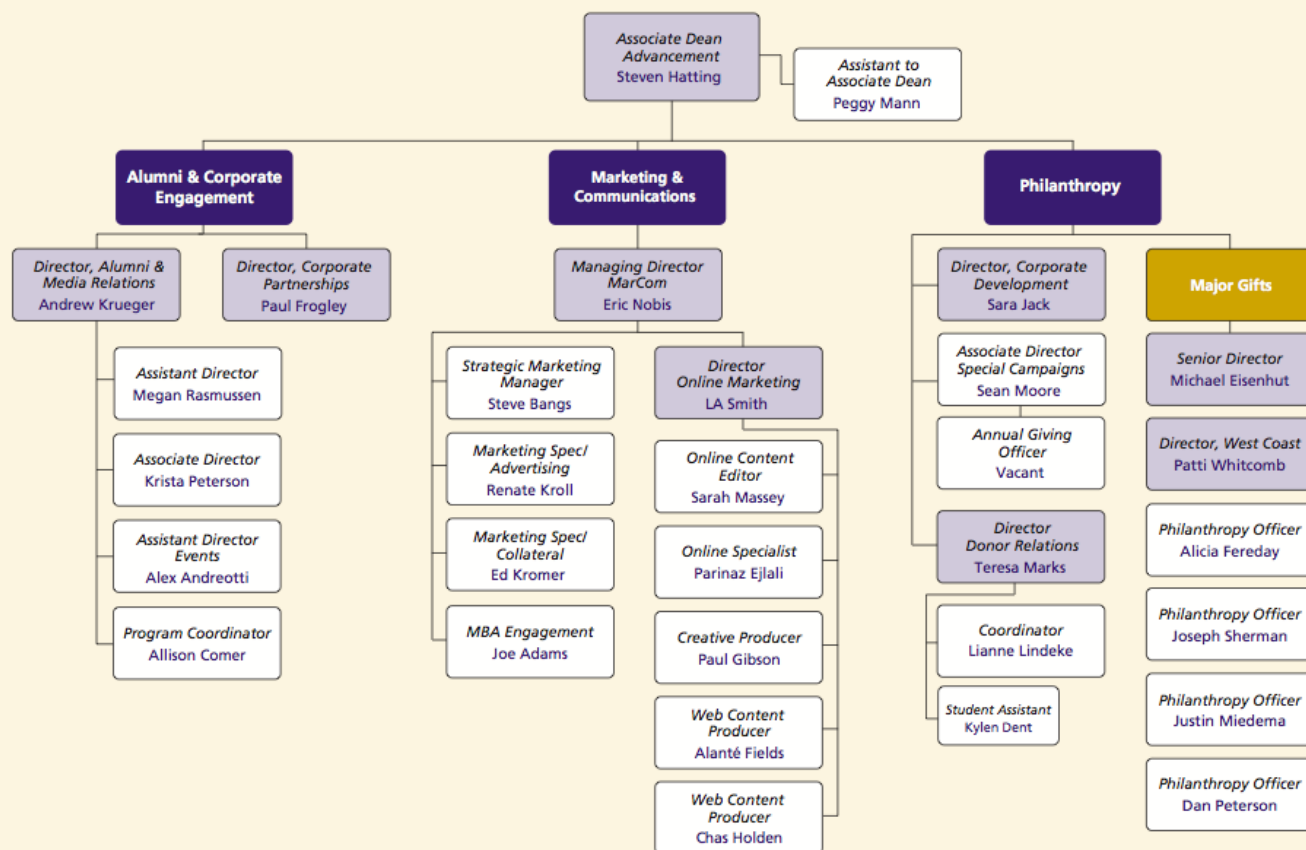
**Alumni Relations &  
Development Team**  
*June 2014*



Foster School of Business, University of Washington

## FOSTER ADVANCEMENT ORGANIZATION CHART

2014-2015



Think differently.  
Make a difference.  
It's the Washington Way.

Foster  
School of Business  
UNIVERSITY of WASHINGTON

PENNSTATE

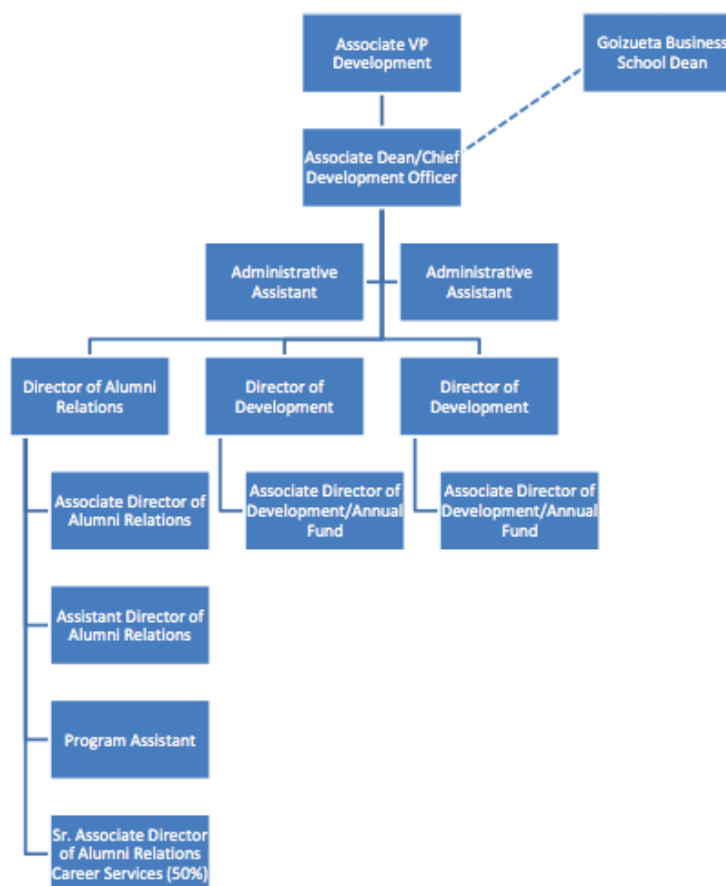


SMEAL College of Business

## Goizueta Business School, Emory University

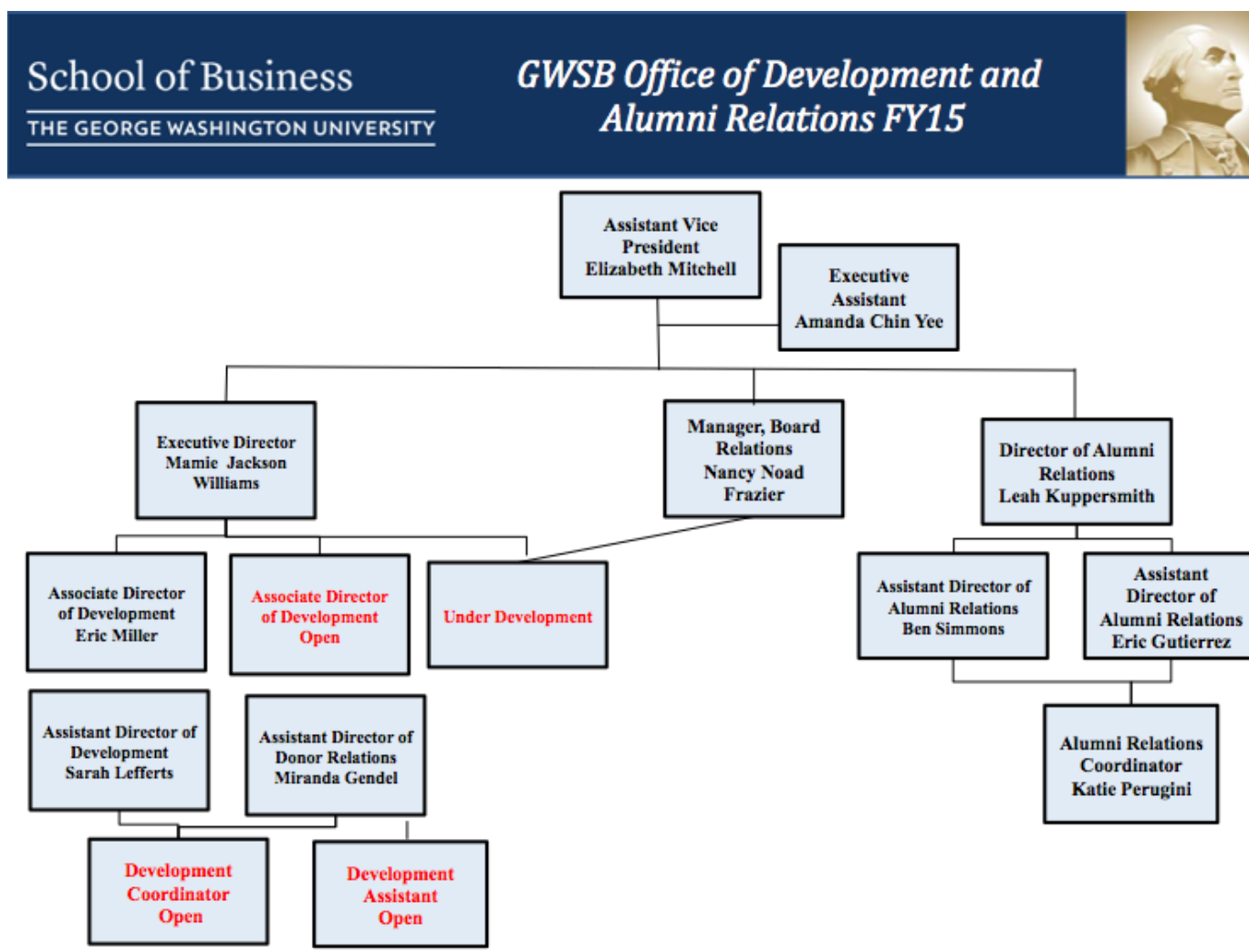


Office of Development and Alumni Relations





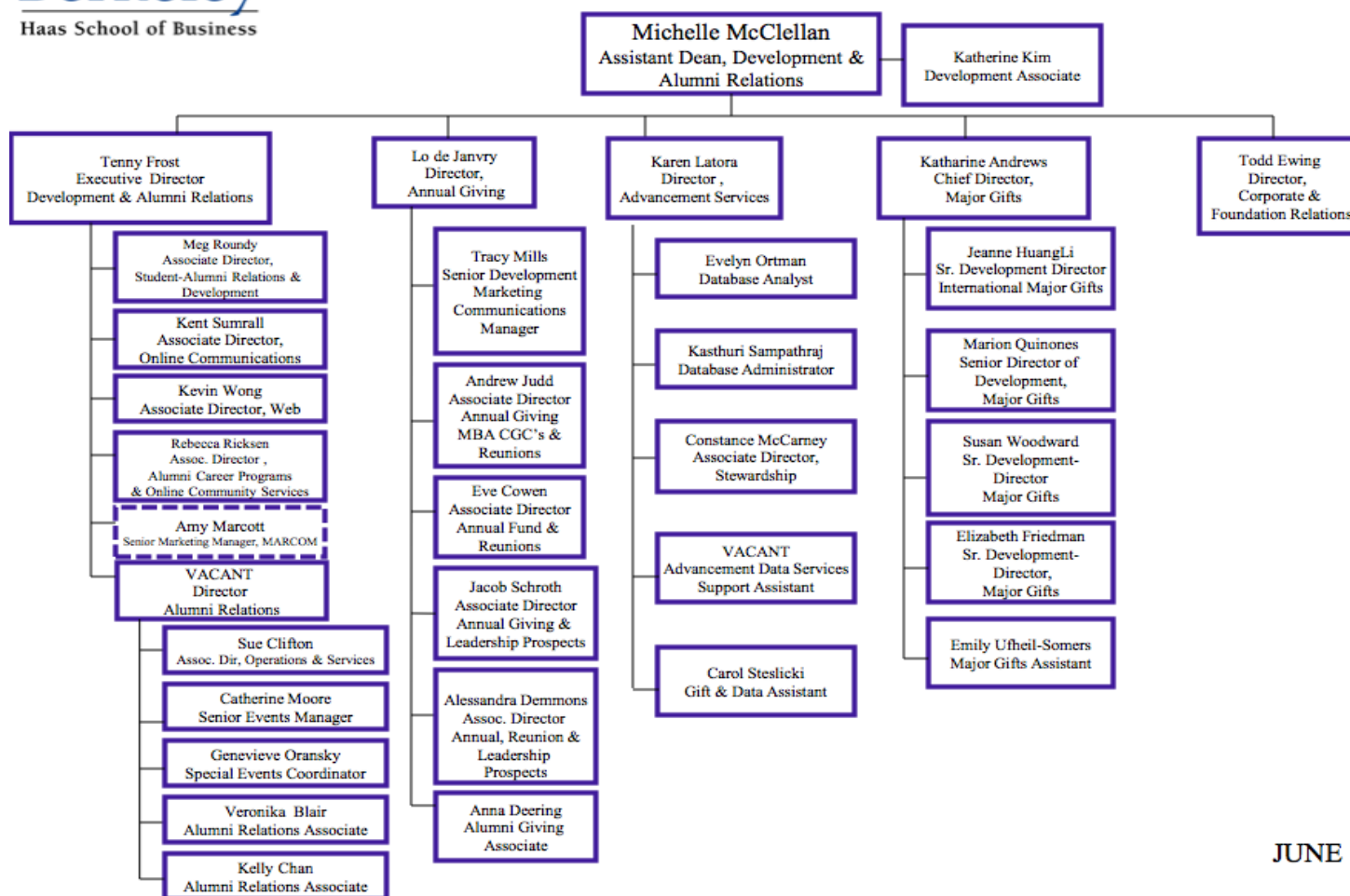
George Washington University School of Business



Haas School of Business, University of California – Berkeley

University of California  
**Berkeley**  
Haas School of Business

**Development & Alumni Relations**



JUNE 1, 2014

PENNSTATE



SMEAL College of Business



Office of Development and Alumni Relations

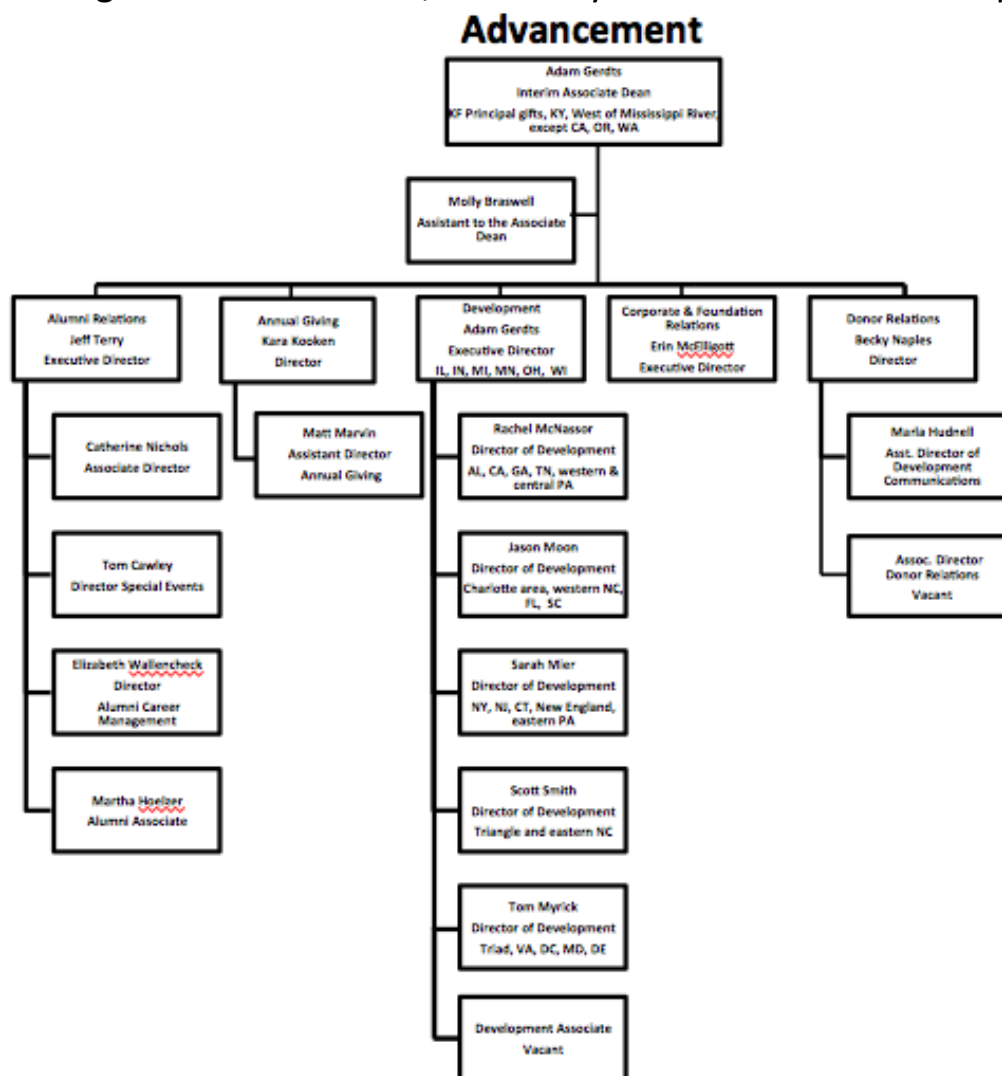
```

graph TD
    VPAA[Vice President for Academic Affairs  
Allan Curry  
Director, Diversity Initiatives] --- PM[Program Manager  
Laura McClellan]
    VPAA --- SDMG[Senior Director, Major Gifts  
Pete Rhoda]
    VPAA --- SDR[Senior Director of Development, Corporate and Foundation Relations  
Pam Warden]
    VPAA --- DSI[Director, Information Systems  
Chad Martin]
    VPAA --- SDA[Senior Director of Advancement  
Rachelle Reeves]
    
    SDMG --- DMG1[Director, Major Gifts  
Herb Caldwell]
    SDMG --- DMG2[Director, Major Gifts  
Doug Ebling]
    SDMG --- DMG3[Director, Major Gifts  
Vacant]
    
    SDR --- DRFR[Director of Development, Corporate and Foundation Relations  
Betsy Feagow]
    SDR --- DAFR[Development Assistant, Corporate and Foundation Relations  
Emily Wieland]
    
    DSI --- SAP[System Analyst/Programmer  
Melinda Beatty]
    DSI --- DISI[Data Integrity Specialist  
Donna Todd]
    
    SDA --- DA[Director of Advancement  
Vacant]
    SDA --- ADA1[Associate Director of Advancement  
Patrick McAleenr]
    SDA --- ADA2[Associate Director of Advancement  
Dana Romaga]
    SDA --- AS[Advancement Specialist  
Molly Petersen]
    SDA --- SAD[Senior Associate Director of Advancement  
Janice Headley]
    SDA --- ADAD[Associate Director of Advancement  
Vacant]
    SDA --- ADA3[Associate Director of Advancement  
Brandy Taulbee]
    SDA --- ASDS[Advancement Specialist  
Sarah McAlone]

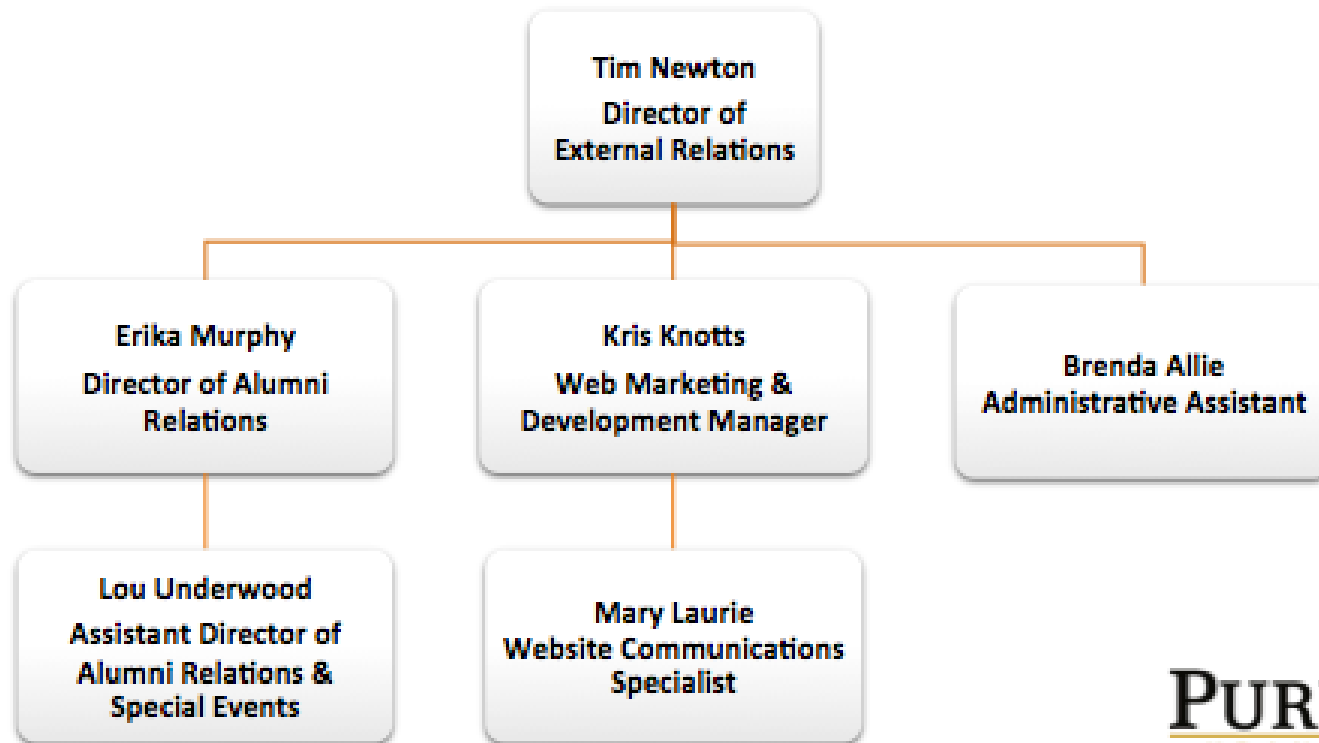
```

The organizational chart for the University of North Carolina at Chapel Hill shows a hierarchical structure starting with the Vice President for Academic Affairs, Allan Curry, who oversees five main areas: Program Management, Senior Director of Major Gifts, Senior Director of Development, Corporate and Foundation Relations, Director of Information Systems, and Senior Director of Advancement. Each area has several direct reports, some of whom are further divided into their own teams.

Kenan-Flagler Business School, University of North Carolina – Chapel Hill



Krannert School of Business, Purdue University

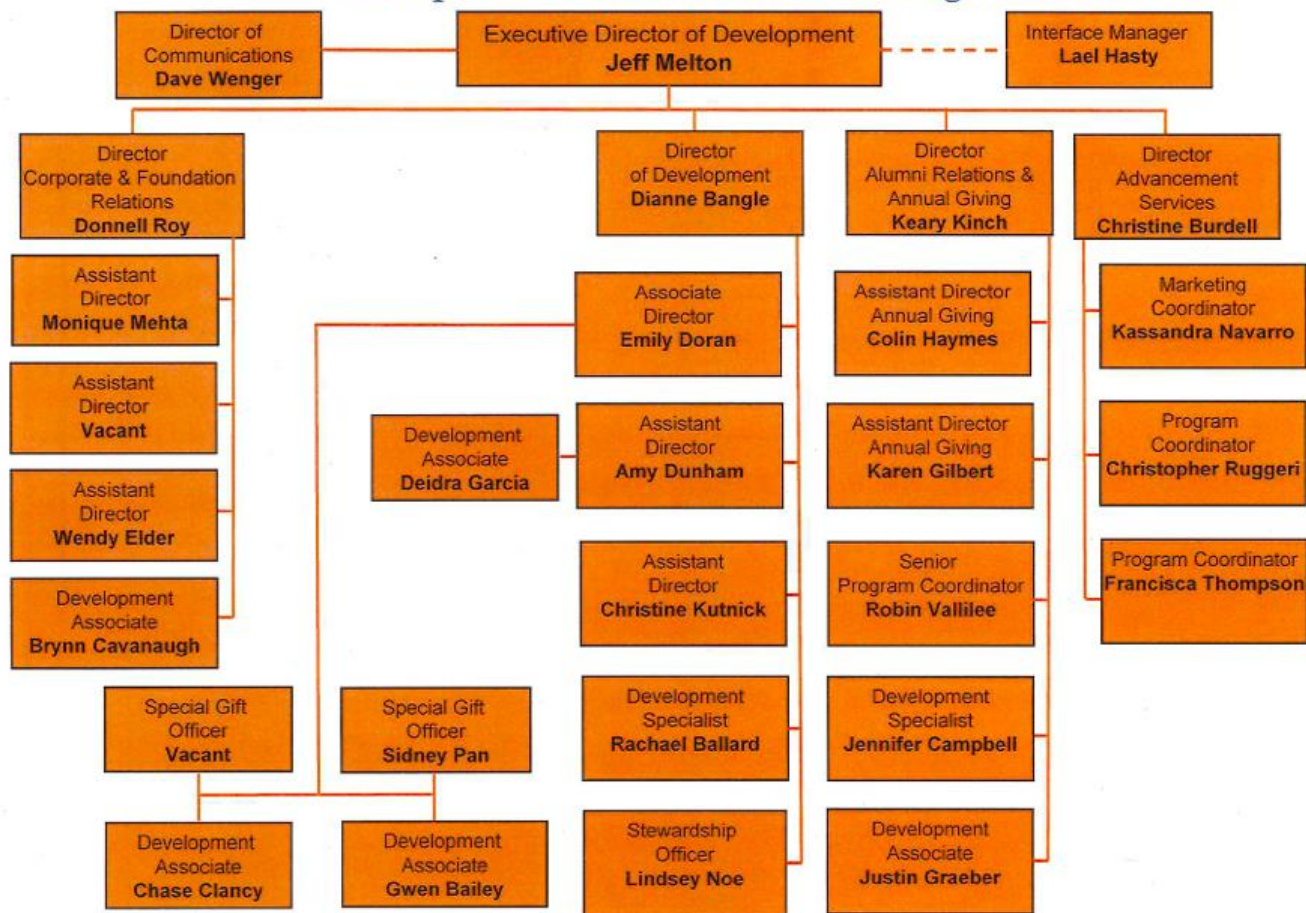


**PURDUE**  
KRANNERT  
SCHOOL OF MANAGEMENT

McCombs School of Business, University of Texas – Austin



Development and External Relations Organizational Chart



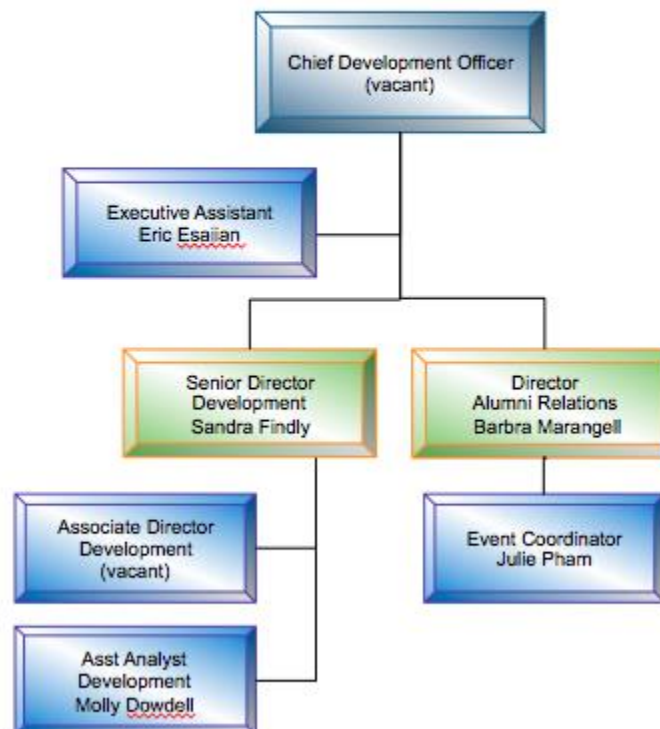
LMH as of 6/24/2014



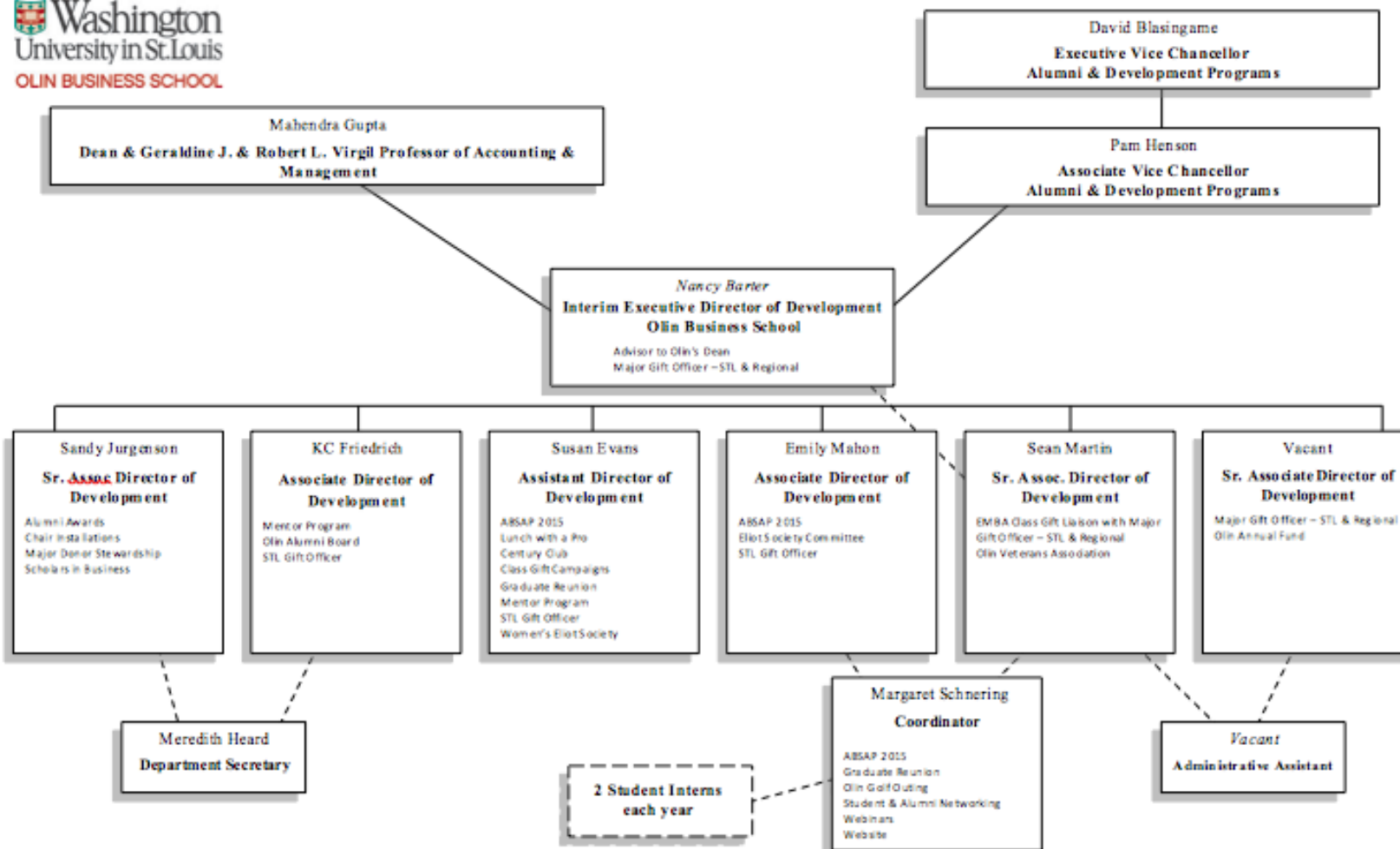
Paul Merage School of Business, University of California – Irvine



**DEVELOPMENT  
& ALUMNI RELATIONS**

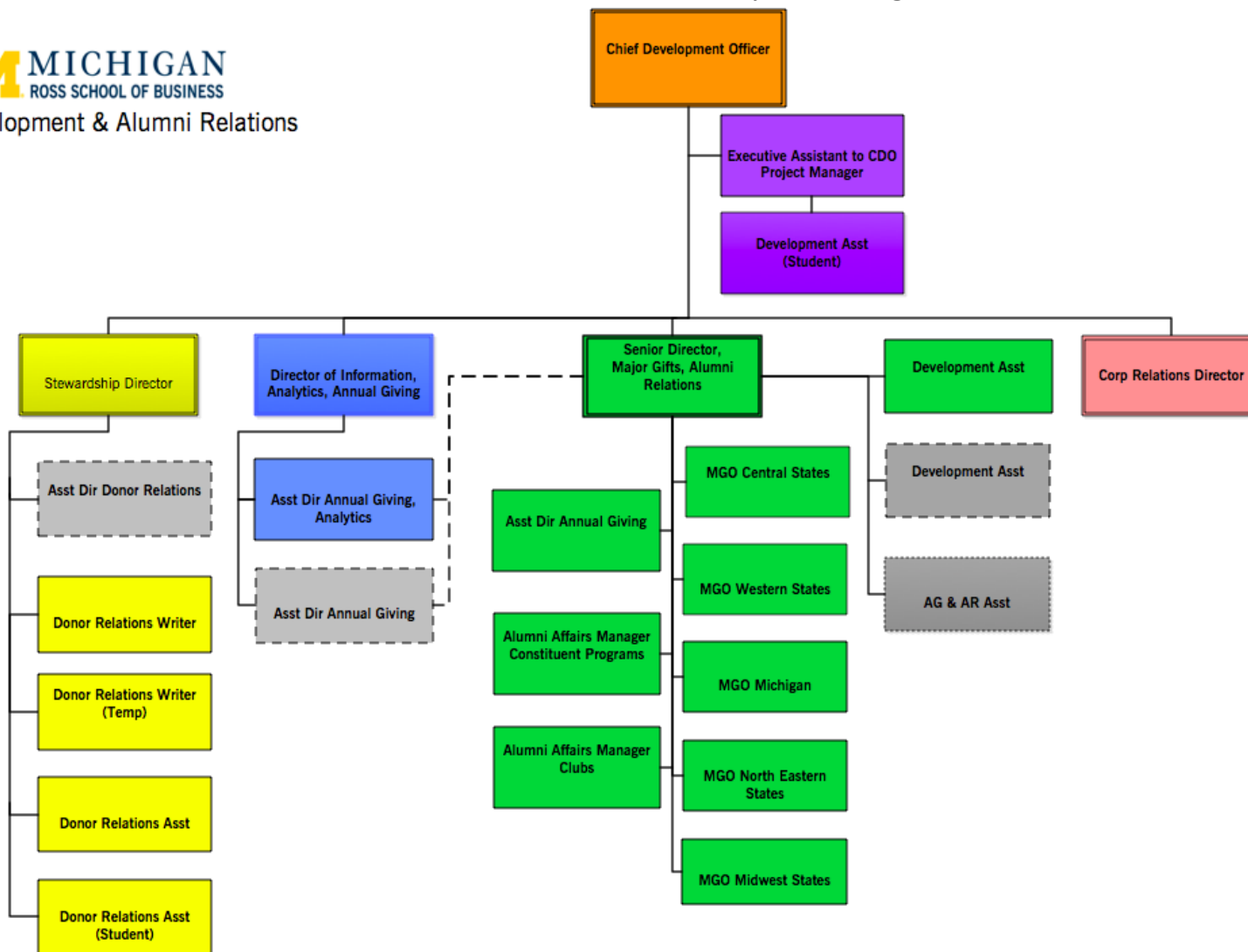


Olin Business School, Washington University in St. Louis

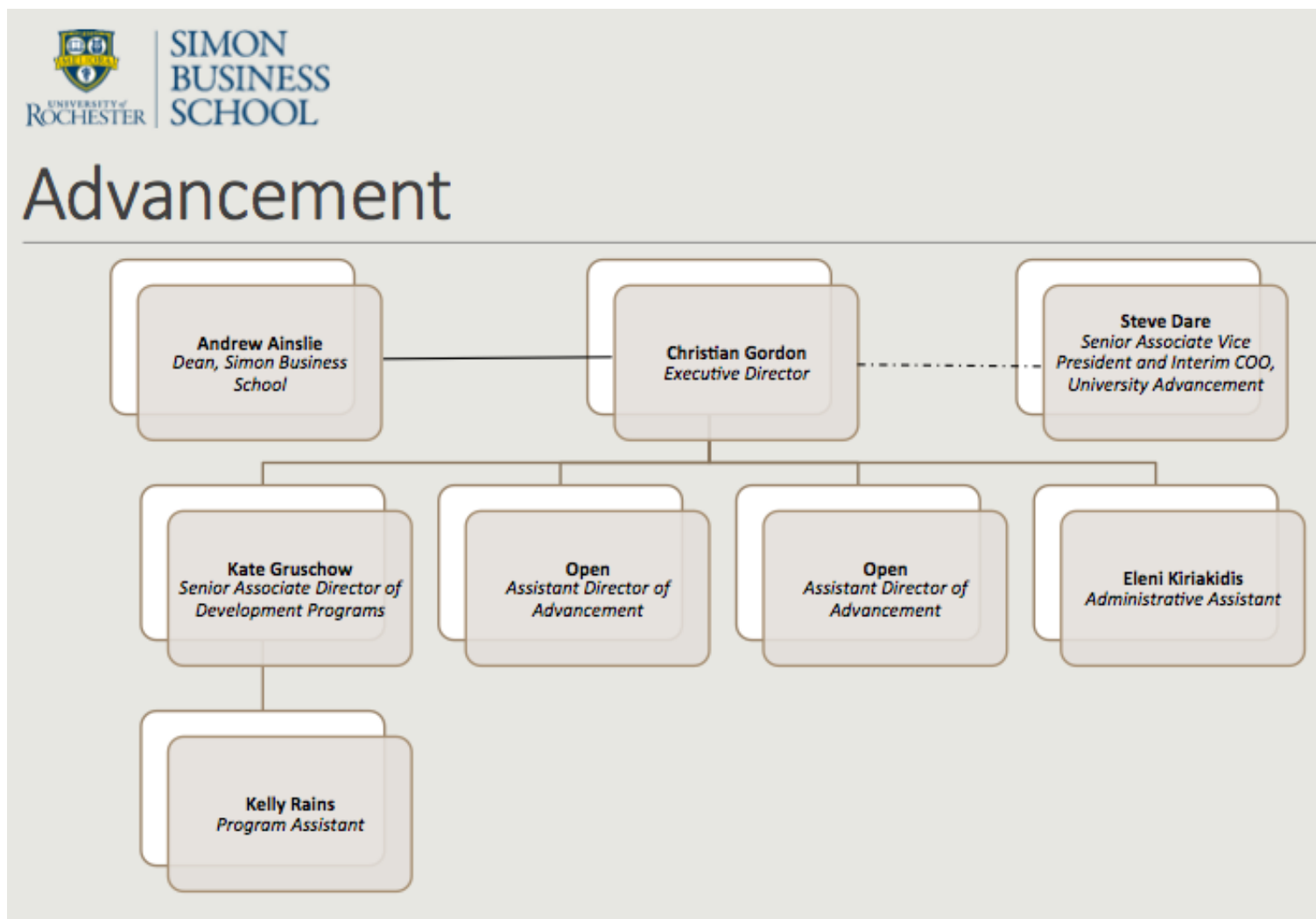




Ross School of Business, University of Michigan

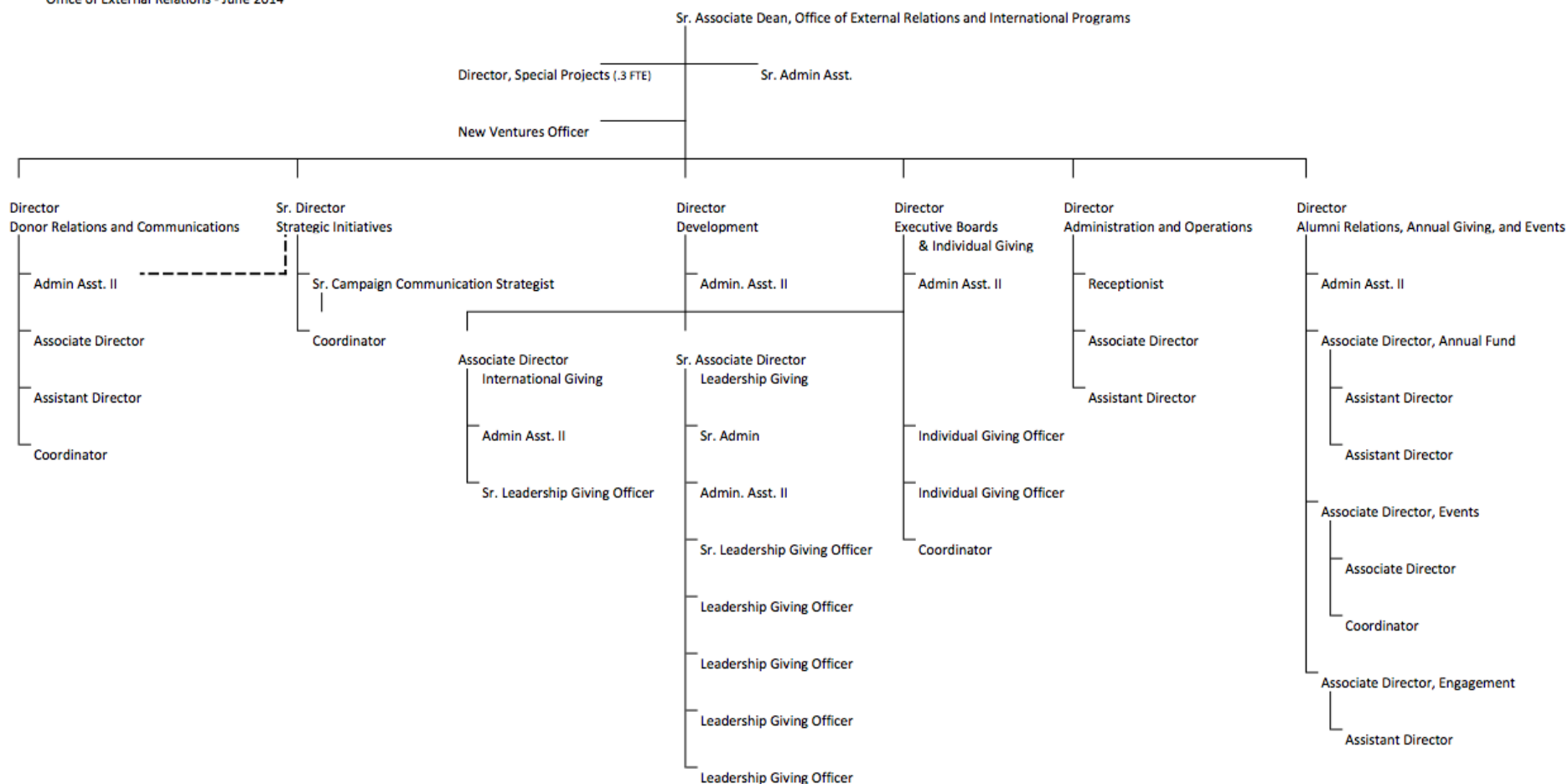


Simon Business School, University of Rochester



## Sloan School of Management, Massachusetts Institute of Technology

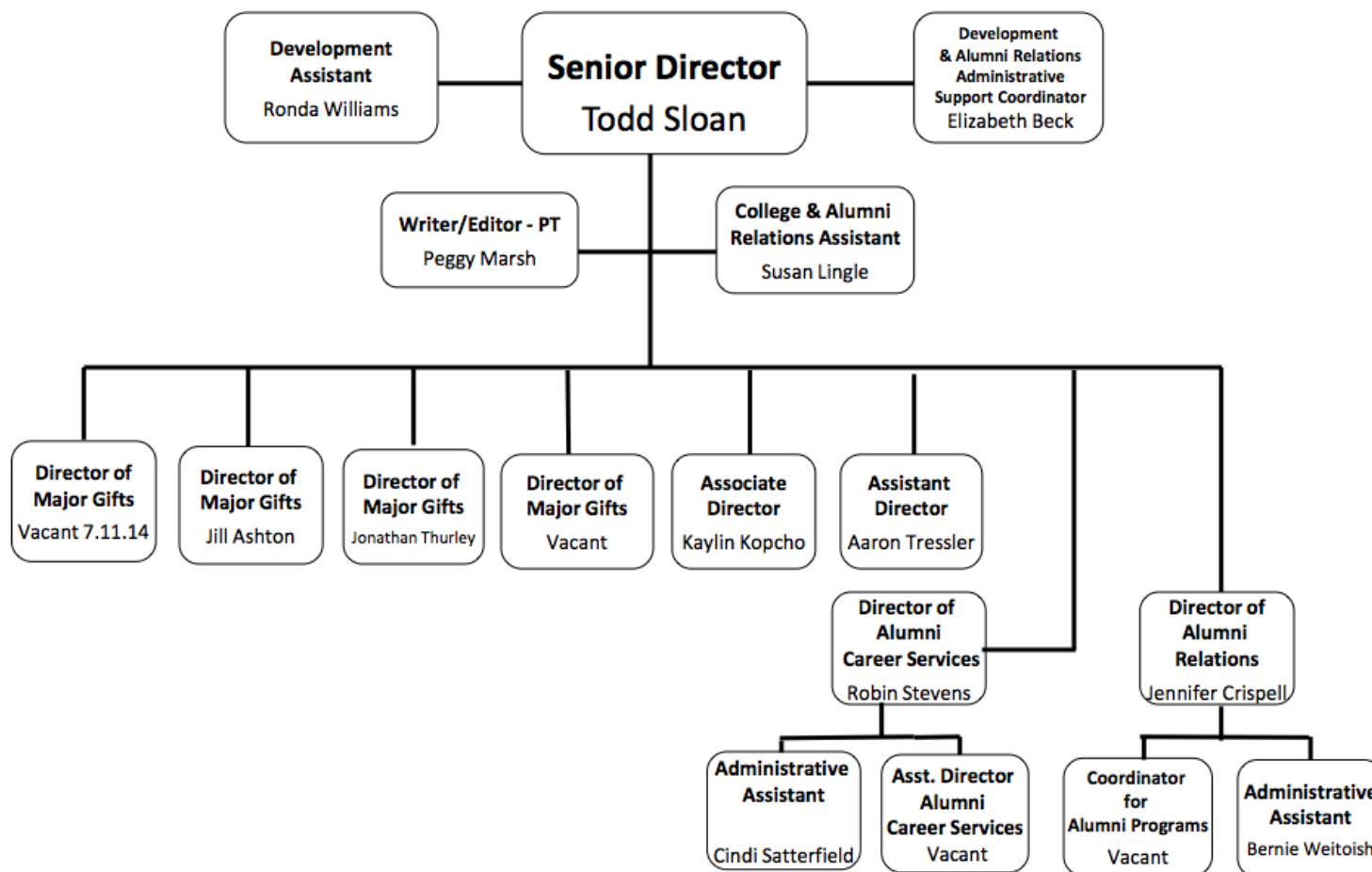
MIT Sloan School of Management  
Office of External Relations - June 2014



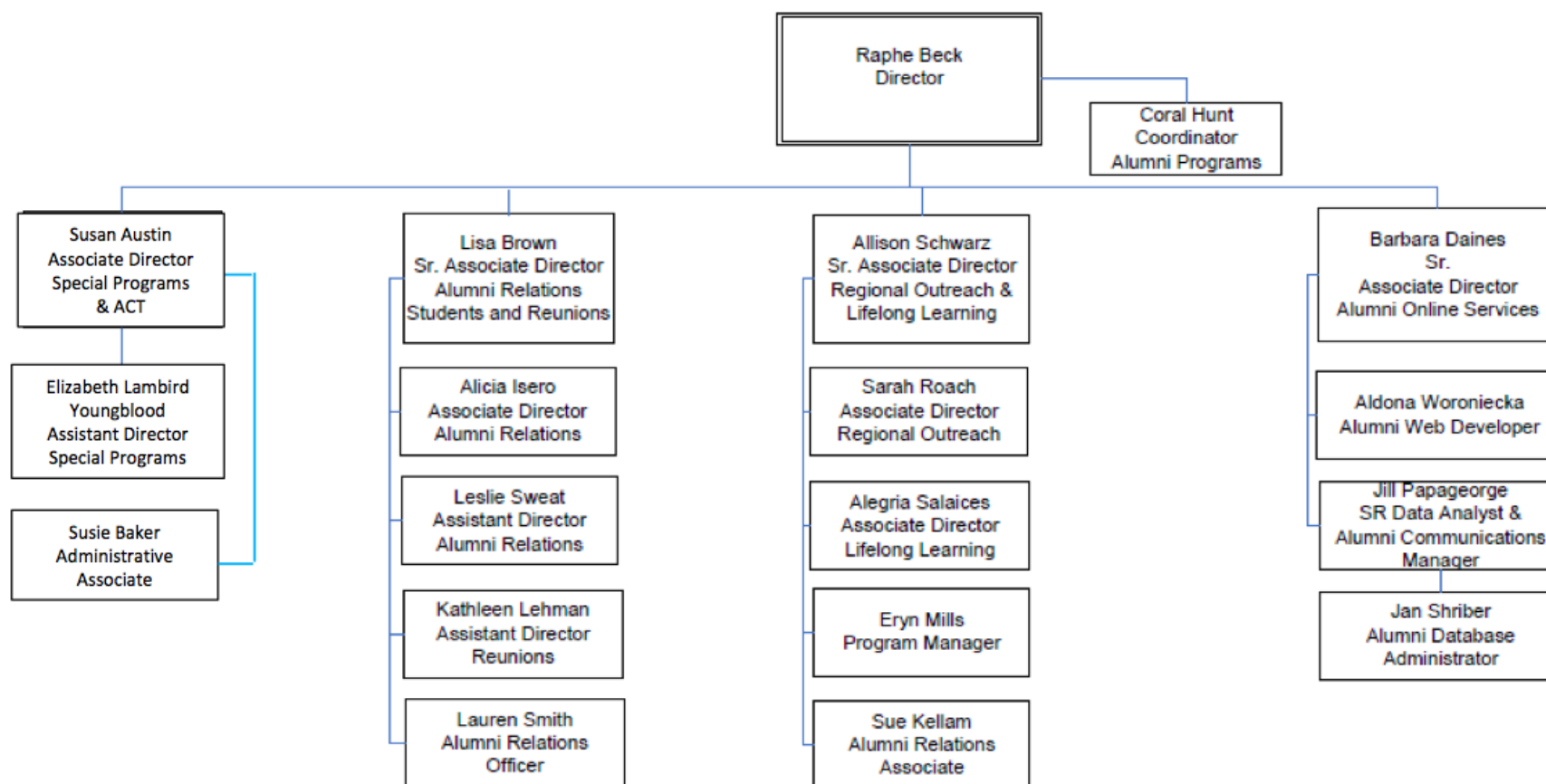
Smeal College of Business, Penn State University



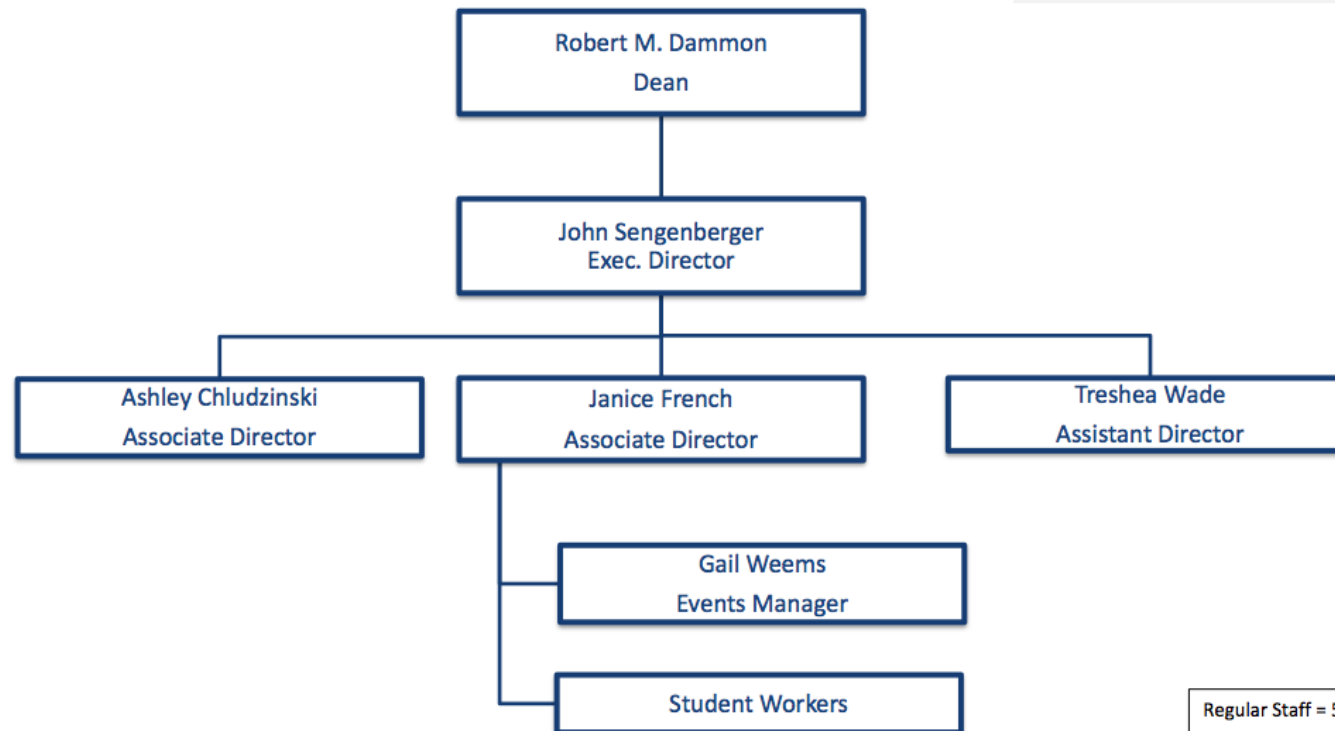
## Development / Alumni Office



Stanford University Graduate School of Business



Tepper School of Business, Carnegie Mellon University

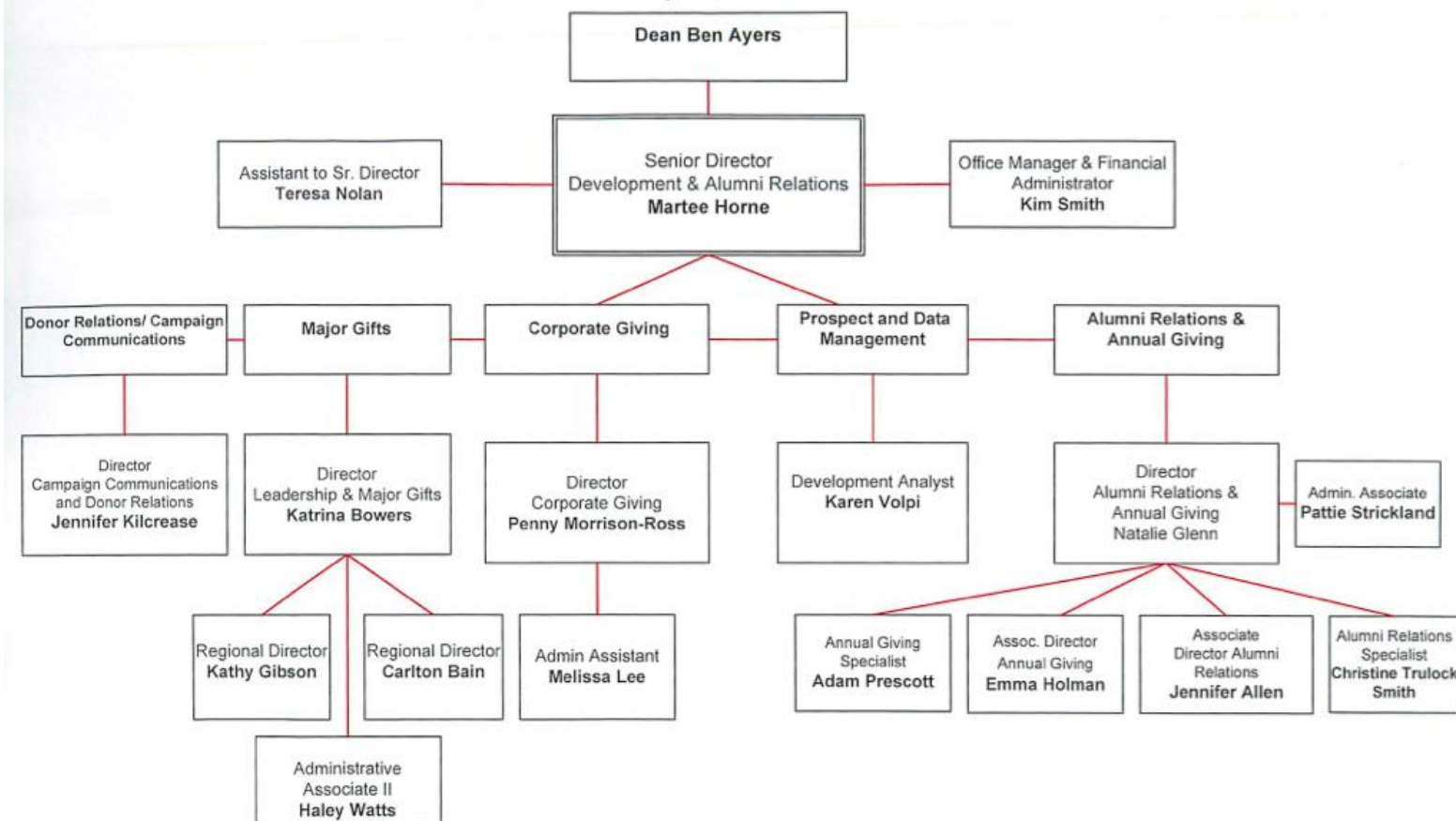


Regular Staff = 5

June 2014

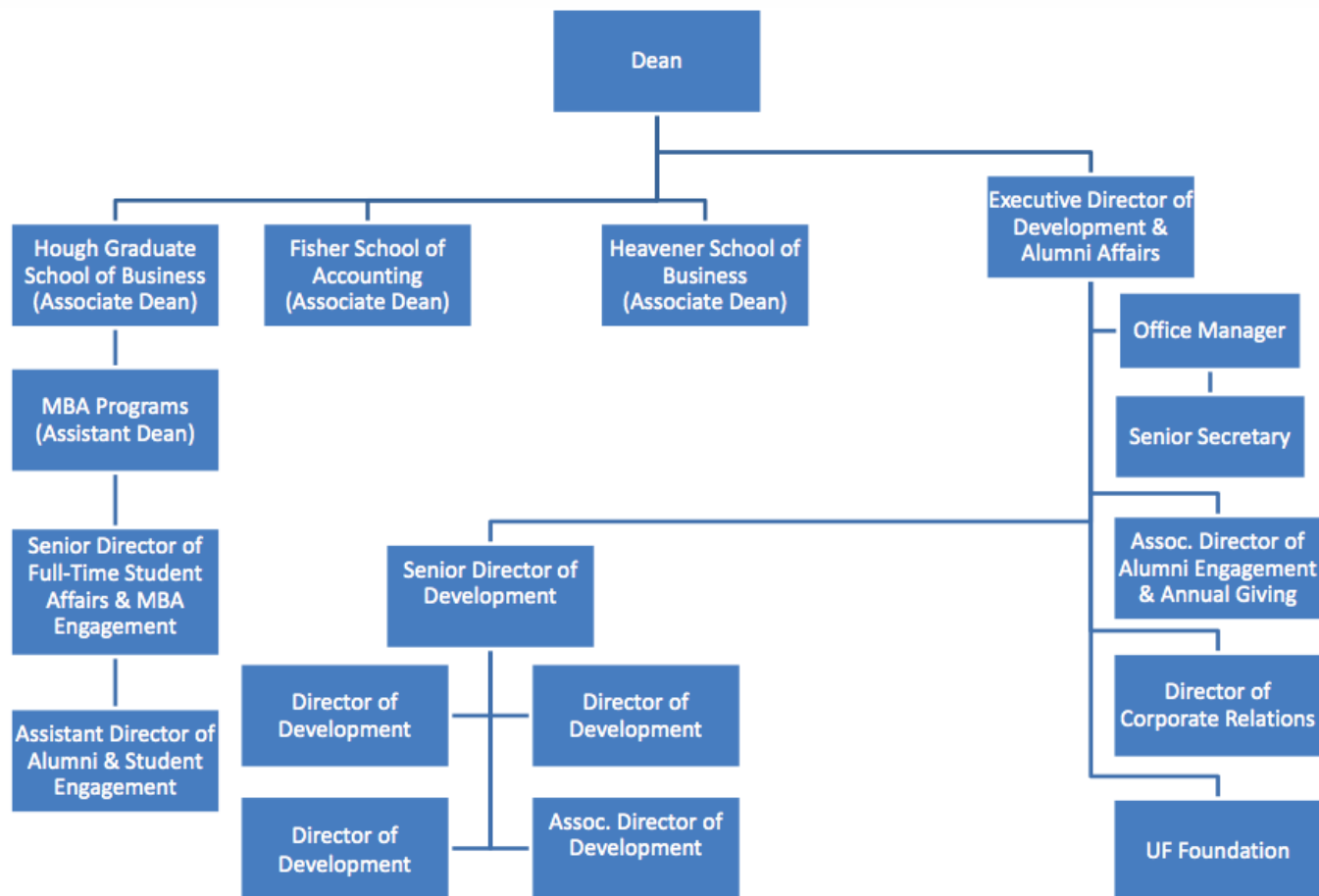
## Terry College of Business, University of Georgia

### UGA Terry College of Business Office of Development and Alumni Relations





Warrington College of Business Administration, University of Florida



PENNSSTATE



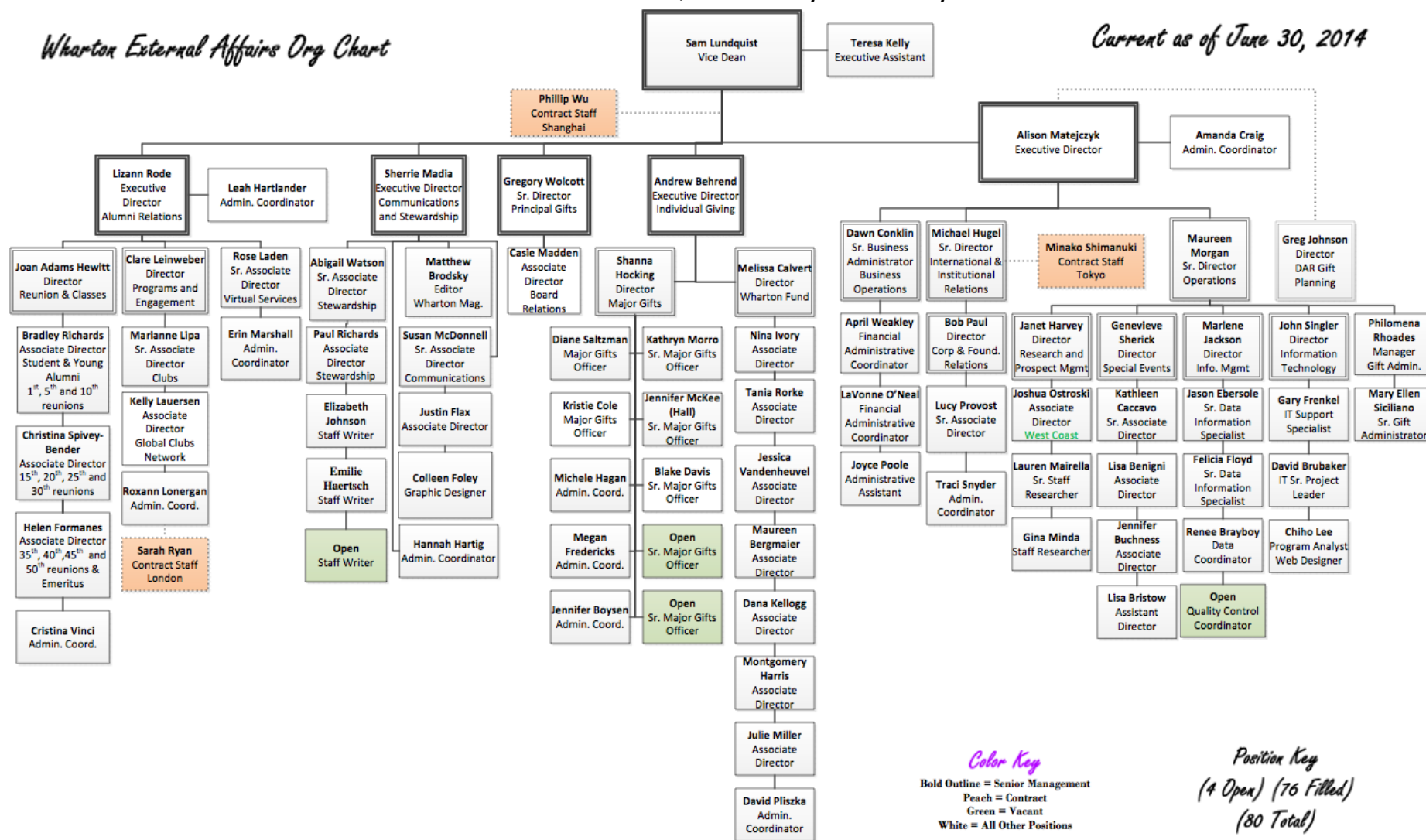
SMEAL College of Business



The Wharton School, University of Pennsylvania

*Wharton External Affairs Org Chart*

*Current as of June 30, 2014*



University of Wisconsin School of Business

## Advancement Team

**Dean**

**Chief of Staff & Director of External Relations**

**Director of  
Corporate Relations**

**Director of  
Alumni Relations**

**Managing Director  
of Development  
UW Foundation**